



RockFLEET can report your position and provide communication options from anywhere on Earth with a view of the sky.

Operates as a standalone GPS tracker, and is compatible with iPhone/iPad and Android for messaging. It can also be used as a comms device with any serial based controller.



Features

- Autonomous GPS tracking
- Various mounting options for covert or non-covert installation
- Transmission via both GSM and/or Iridium Satellite (via optional add-on)
- Full 2-way communication system from anywhere on Earth
- Integrated Power Conditioning (9-30v)
- Internal Battery Backup, allows for up to 2 weeks of unpowered operation
- Truly Global Operation, using the Iridium satellite network
- Over-the-air reconfiguration of key parameters such as tracking frequency
- Optional serial integration add-on to provide sat-comms to other devices

Features & Contract Options

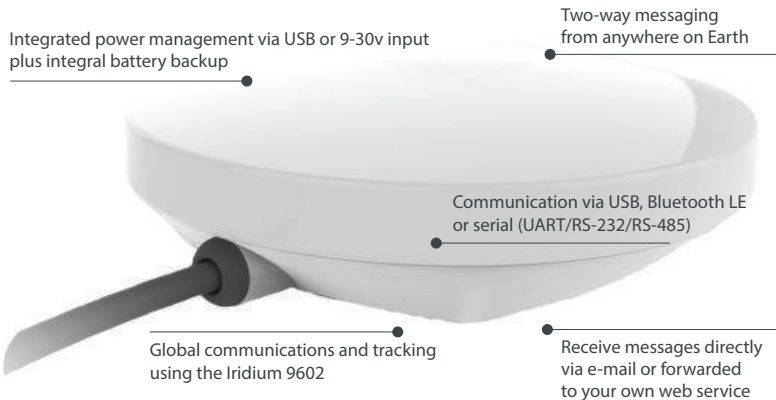
RockFLEET Device Costs		Individual Price
RockFLEET Iridium-Only		£469.00
Optional GSM add-on for least cost routing		£100.00
Optional Serial (UART/RS-232/RS-485) add-on		£60.00
Corporate accounts can have more than one device per account, and pool credits between devices		
Monthly Line Rental		£17.00
There is no minimum contract, simply pay per month when you need to use the RockFLEET		
Credits (used for messages)		
Bundle	Price Per Credit	Bundle Price
500 Credits	£0.10	£50.00
1000 Credits	£0.09	£90.00
2000 Credits	£0.08	£160.00
5000 Credits	£0.07	£350.00
10,000 Credits	£0.06	£600.00
20,000 Credits	£0.045	£900.00
50,000 Credits	£0.035	£1750.00
50,000+ Credits	Further discounts available...	
Volume discounts available for over 10 units - please ask for details		

1 credit is used per position report from a RockFLEET unit
 1 credit is used per 50 characters in a message to/from a RockFLEET unit
 Messages to mobile phones cost 1 additional credit for SMS delivery
 Credits do not expire unless no monthly fees have been paid for 12 months
 All prices subject to VAT and/or any local taxes applicable to your state or country.

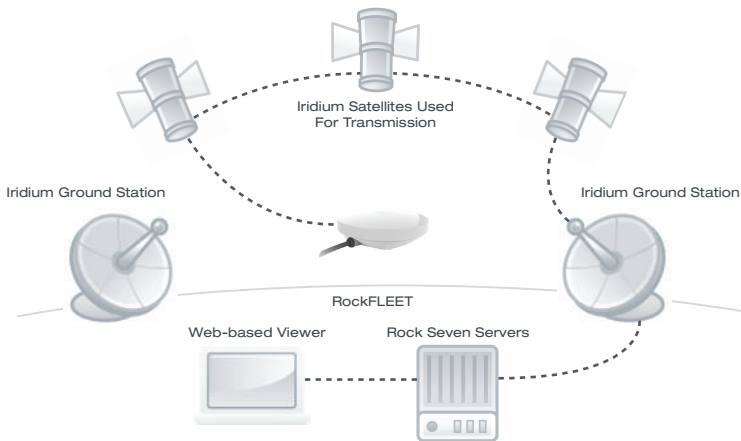
Key Functionality

Coupled with our intuitive web-based control panels and your services:

- » **Power Requirements** – RockFLEET takes its power from a 9-30v DC supply. It also has a built-in battery backup unit which will allow it to operate for up to 2 weeks without external power (depending on transmission rate and settings).
- » **Messaging** – Combined with our RockCONNECT app, you can use your smartphone or tablet to send and receive short e-mails and SMS via the RockFLEET from anywhere.
- » **UART/Serial Direct Interface** – The serial version of the RockFLEET allows you to connect your own equipment and use the unit to send/receive your own customised data and messages.
- » **How to Integrate** – The RockFLEET can appear as a serial interface, and you can talk to it using a simple set of commands. You can also use the Bluetooth LE API, if you wish to use it to send messages remotely.
- » **Message Delivery** – Messages sent from RockFLEET via serial can either be delivered to your chosen email address, or sent to your own web service as a simple HTTP POST.
- » **Sending Data** – You can make a simple HTTP POST to our web service. The message is queued on the satellite network almost instantly, ready for RockFLEET to download (on your command)
- » **Costs and Contracts** – Please see the table to the left for costs. There is a monthly cost, plus the system uses 'credits' to send and receive messages. There are no annual contracts, you simply pay-as-you-go.



How does the RockFLEET work?



The RockFLEET allows you to track the position of your assets, and send and receive short messages from anywhere on Earth with a clear view of the sky. It can transmit using either GPRS or Iridium satellite, and works far beyond the reach of standard WiFi and GSM networks.

Maybe you want to track your assets wherever they go? transmit weather information from mid-ocean? Or use it to control your robot in the middle of the desert? Perhaps you need to communicate in an emergency, when other networks might not be available? RockFLEET can help you.

At the heart of RockFLEET is an Iridium 9602 modem. The RockFLEET hosts the 9602 and provides it with an antenna, and its power supply requirements. Various options are provided for allowing you to communicate with your own systems, via RS-232, Bluetooth LE and more.

Iridium is the only satellite network that allows transmission of information from any point on Earth – other networks have no coverage in the polar regions, and have intermittent or no coverage in other marine and land areas.

Iridium has 66 satellites in orbit around the Earth, allowing coverage anywhere on Earth 24 hours a day, 7 days a week. No other satellite network has truly global coverage. Messages sent via Iridium take just seconds to reach you, via e-mail or directly to your web-service.

Physical Properties

RockFLEET Unit	120mm diameter x 50mm high
Mounting Options	various (please ask)
Cable Options	3m 9-30v (can be varied)

Environmental Properties

Storage Temperature	-40 to 85 deg C
Operating Temperature	-30 to 60 deg C
Operating Environment	< 75% Relative Humidity
Testing	Rugged Unit - Sealed against dust and water ingress to IP68

Power

Input voltage	DC (9-30v)
Power Consumption	500mA max, plus very low current sleep mode (< 30mA)

Communication

Iridium Modem	9602 short burst transceiver
Iridium Antenna	Maxtena 1621 patch antenna

Product Options

GSM, serial communications, Bluetooth LE
9-30v power input, various mounting bracket options

Available From:

For more information, technical product details and PDF downloads please visit our website.

Disclaimers:

The Iridium logo and word, Arduino word, and Raspberry Pi word are registered trademarks or their respective owners.